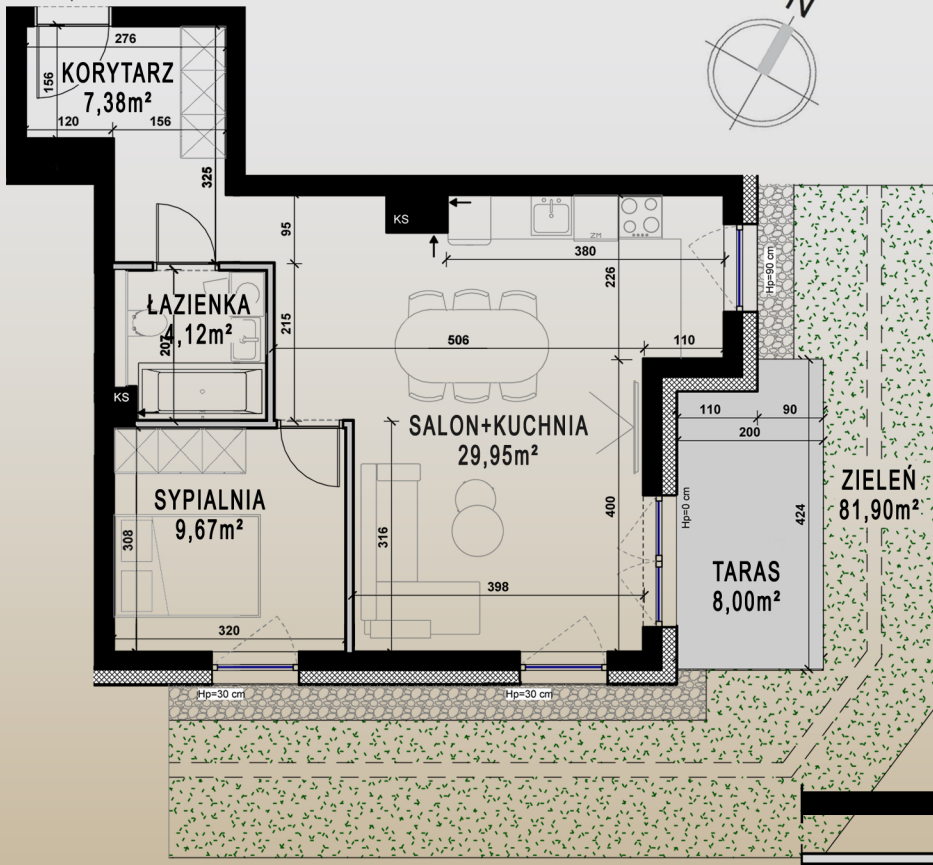


M 6 / B

PARTER

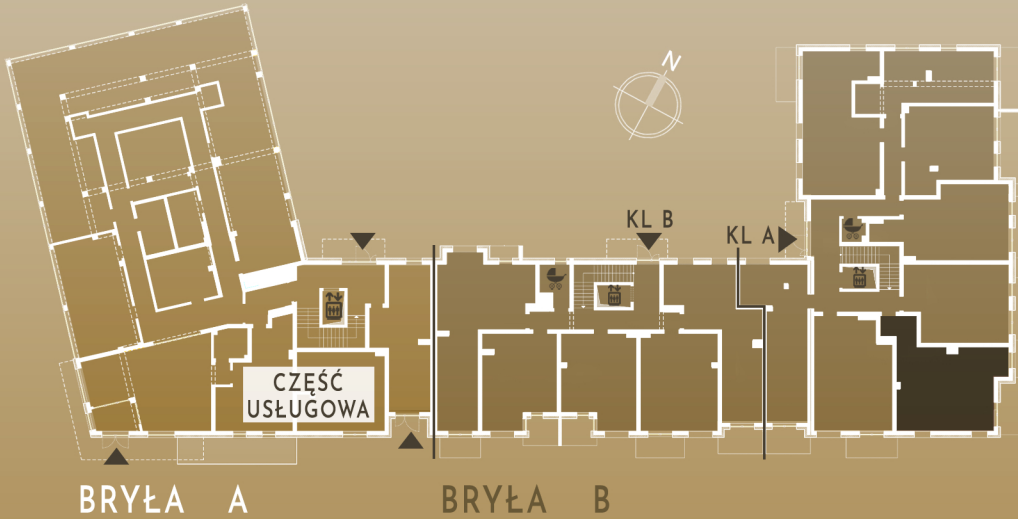
KLATKA A



| | |
|---------------|---------------------------|
| SALON+KUCHNIA | 29,95m ² |
| ŁAZIENKA | 4,12m ² |
| KORYTARZ | 7,38m ² |
| SYPIALNIA | 9,67m ² |
| SUMA | 51,12m² |

| | |
|--------|---------------------|
| TARAS | 8,00m ² |
| ZIELEŃ | 81,90m ² |

ŚCIANY I PIONY BEZ MOŻLIWOŚCI ZMIAN
 ŚCIANY Z MOŻLIWOŚCIĄ ZMIAN



MASURIA



I Ł A W A

